



9 Green Close

Bristol, BS39 7HA

£299,950

Built in the year 2000, this three bedroom semi detached home is ideally situated in the village of Paulton.

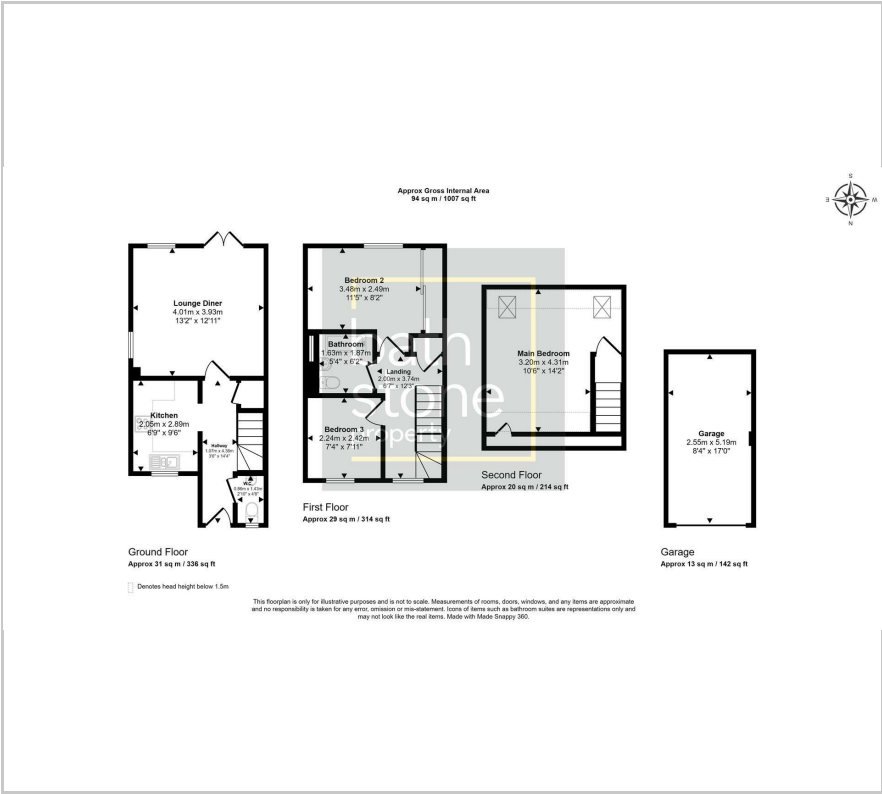
- No onward sales chain!
- Countryside on your doorstep
- Ideal first purchase
- Garage/Off-street parking
- Amenities close by
- Ideal for commuters (Bath/Bristol)

Viewing

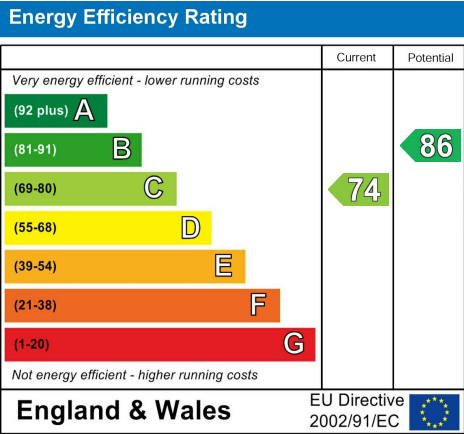
Please contact our Bath Stone Property (MSN) Office on 01761 360144 if you wish to arrange a viewing appointment for this property or require further information



Floor Plan



Energy Efficiency Graph



Please give us Feedback



These particulars, whilst believed to be accurate are set out as a general outline only for guidance and do not constitute any part of an offer or contract. Intending purchasers should not rely on them as statements of representation of fact, but must satisfy themselves by inspection or otherwise as to their accuracy. No person in this firms employment has the authority to make or give any representation or warranty in respect of the property.